

# In My humble opinion...



**Instructions:** Read the statements below. If the statement is a fact (something that can be proven to be true), circle the word under "F." If the statement is an opinion (something that someone feels, believes, or thinks), circle the word under "O." When you're done, read from top to bottom for a secret message.

- Each year, more than 50 percent of aluminum cans are recycled.
- Grass clippings should always be composted.
- In 1999, 47.3 million tons of paper and paper products were recovered for recycling.
- Glass products have been made and recycled in the United States since colonial times.
- Reducing your waste is really easy.
- I think you should garden without chemicals.
- Fewer than 25 percent of plastic bottles and jugs are recycled each year.
- It's better to buy products in aluminum or glass containers.
- In 1998, 20 million personal computers became obsolete.

**F O**

Recycle    Reduce  
When    What  
You    They  
Buy    Reject  
Nor    And  
Choose    Buy  
What    Who  
He    You  
Recycle    Reuse

# MISSING MATH



Glass containers have been in use for around 7,000 years. Using sand and other ingredients, people began making glass containers in about \_\_\_\_ B.C. Modern glass manufacturers mix sand, soda ash, limestone, and cullet (recycled glass) to make new glass. The mixture is melted in furnaces that heat the materials to 2700 degrees Fahrenheit—that's \_\_\_\_ times hotter than it is on a 100-degree summer day. Today, the average bottle or jar weighs about a half pound, meaning there are \_\_\_\_ bottles in a ton. About 35 percent of glass bottles and jars are being recycled. Unfortunately, of every 100 bottles and jars, \_\_\_\_ go in the trash.



# THE STANDARD SENTINEL

APRIL 5, 2105

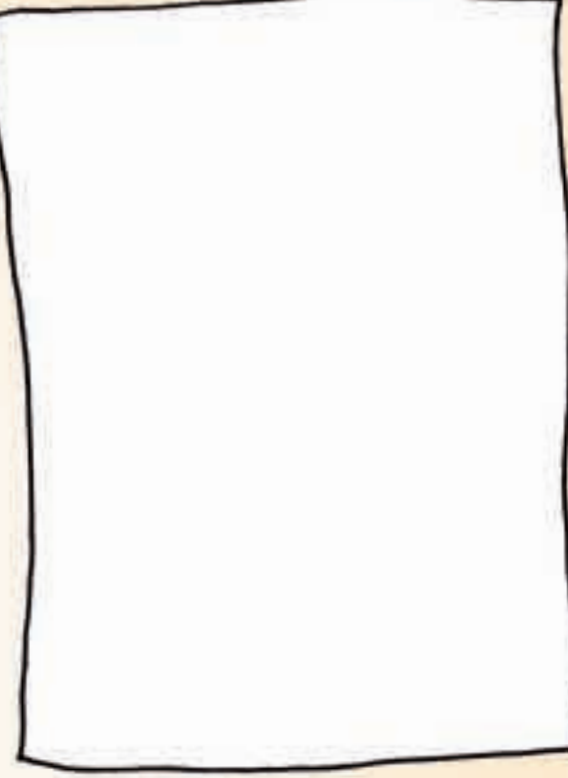
SECTION C, PAGE 1

OVER SPRING BREAK, I went on a trip back in time. I went back to visit the United States in 2002.

The people had many strange ways. As I walked down the sidewalk, I couldn't help but notice grass-cutting machines that made a great amount of noise—very different from today's solar-powered mulchers. The loud machines had strange attachments on their sides. It seemed the grass cuttings were blown into the attachment and then, occasionally, were emptied into different containers. Once the lawn was totally cut, these containers were dragged to the street. Later in the day, very large and noisy trucks came to empty the containers.

These people appeared to be very hard-working. Why else would they spend their hard labor and valuable resources on such a useless activity? Perhaps they didn't know that leaving the cut grass on the lawn provides food and water to the grass roots and cuts down on the growth of weeds. Plus, much energy and people-power were wasted as trucks traveled up and down the streets to collect the cuttings.

We must count ourselves fortunate to live in such an enlightened time!



- What is the strange attachment the reporter is writing about?
- Write four details from the article that led you to your conclusion.
- Write a headline for the article, and place it at the top of the article.
- Draw a picture of the activity in the space to the right of the article. Caption the picture.

# RECYCLABLE RIDDLES



**Instructions:** Solve the riddles below. The answers will be recyclable or recycled-content materials. We've done the first one for you.

- I'm black and white and read all over. What am I? Newspaper
- I used to lie on the beach, but I melted in the heat. Now the beach is off-limits to me. What am I? \_\_\_\_\_
- I hold water, sports drinks, and juice. I'm the teacher's pet, the coach's pet, even your pet. What am I? \_\_\_\_\_
- I'm smooth on the outside but wavy on the inside. What am I? \_\_\_\_\_
- I used to hold your favorite soft drink, but now my motto is "tread on me." What am I? \_\_\_\_\_
- I'm a cylindrical drink holder, but you can call me Al. What am I? \_\_\_\_\_
- I deliver your breakfast cereal and the shirt from Aunt Ida on your birthday. What am I? \_\_\_\_\_
- I'm a "tin." What am I? \_\_\_\_\_

# BEST GUESSED?

- Review the list of recyclables.
- Guess the measurement in inches and record your guess under the "Guesstimate" column.
- Take this newsletter home, measure the recyclables, and record the results under the "Actual Measurement" column.
- Record the difference between your guess and the actual measurement in the "Difference" column.
- Determine your difference ranking!



Recyclable	Guesstimate	Actual Measurement	Difference
Height of a large mayonnaise jar	_____	_____	_____
Circumference of a 1-gallon plastic milk jug	_____	_____	_____
Diameter of a soft drink can	_____	_____	_____
Width of a newspaper	_____	_____	_____
Length of a paper grocery sack	_____	_____	_____
TOTAL	_____	_____	_____
Total difference rankings:			
0 to 5 inches—Measurer extraordinaire.			
5 to 10 inches—Spend more quality time with your ruler.			
10+ inches—Enroll in a "Ruler Refresher" course over the summer.			